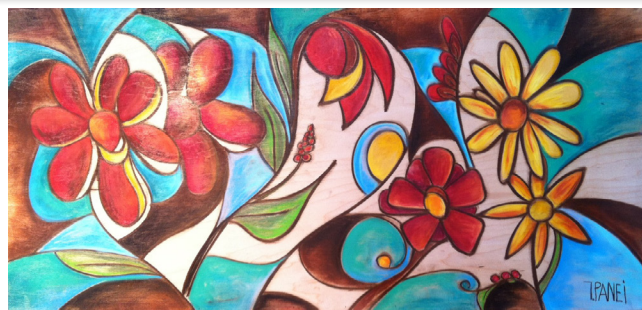




Artwork by THOMAS V. PANEI



Tom Panei is an artist residing in Butler, Pennsylvania. Working with chalk pastels has become his passion. Straying from the traditional realism embraced by many pastel artists, Tom's work recalls the cubism assemblage methods of Pablo Picasso and George Braque. He has created and mastered his own technique of blending chalk pastels on wood panels that has become his signature style. Everything from his colorful abstracts to his large vibrant murals are recognized throughout the tri-state area and beyond.

Throughout his career, Tom has gained a following of collectors from coast to coast in the continental United States in addition to Hawaii. Recently, international collectors from Canada, Italy, and Germany have also commissioned Tom for work. His art has been featured in many articles and publications throughout the country. Winning numerous awards throughout his career, he recently was bestowed the Key to the City of Butler, Pennsylvania as the first Artist-in-Residence. He also gives lectures, teaches, and presents workshops to students in schools and also privately. Since 2011, Tom has been selected to participate in the prestigious international art show, Art Prize, in Grand Rapids, Michigan. In 2013, he was chosen to display his work at The Gerald R. Ford Presidential Museum, where he became an instant hit. Furthering his appeal, Tom has starting performing 'Live Art' shows at selected venues and clubs. Combining music with his art, he has

created a one of a kind experience. For further information or to contact Tom, please visit www.tompanei.com or call (724)355-1926.

